

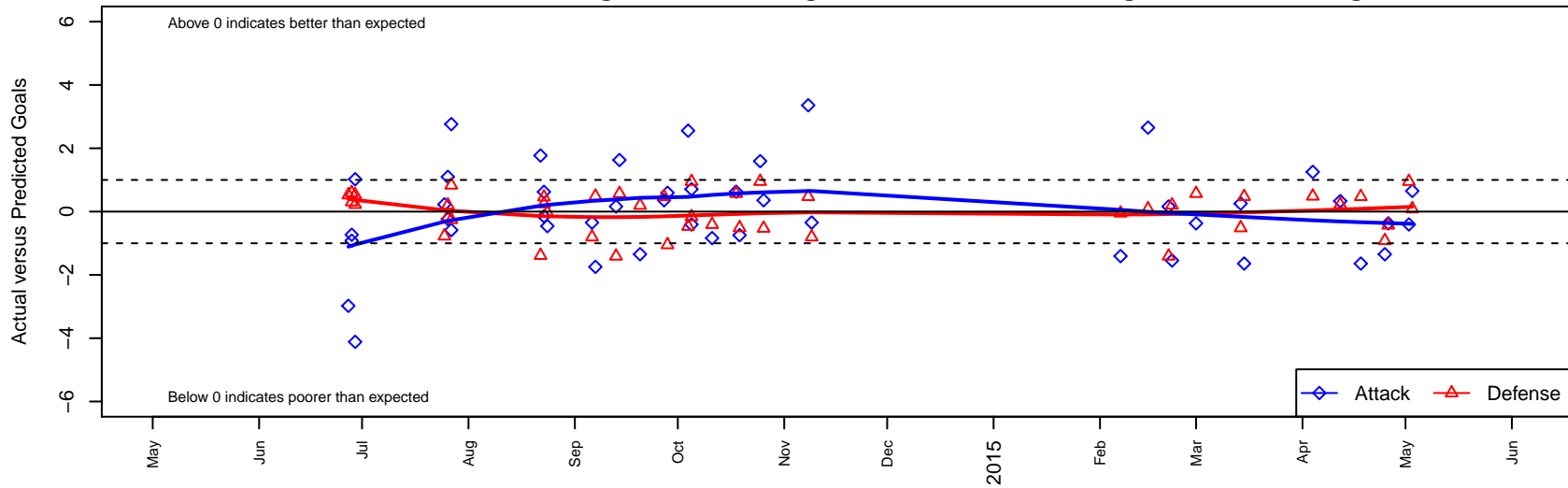
Capital FC Timbers Red G01

Cascade Futbol Club/Capital FC
 Salem, OR
 G01 total strength=1422
 attack=8.59 defense=8.67
 fall league = PTT G01 Premier
 spr league = Spr OYS G01 Premier

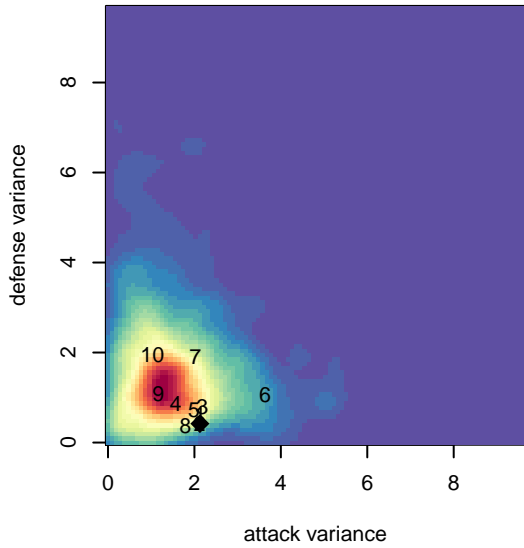
alt names used:

Venues played:
 2014 Capital Cup GU13-14 Gold
 2014 Oswego Nike Cup Gold U13
 2014 NWCL U13
 2014 PTT G01 Premier
 2014 Spr OYS G01 Premier
 2014 OYS State Cup G01

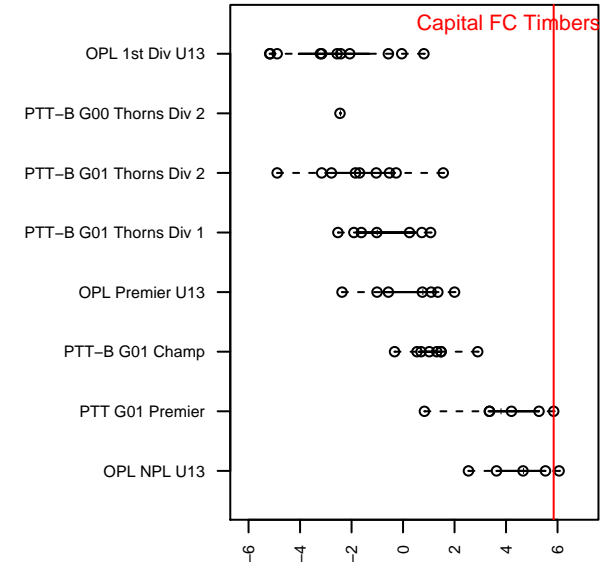
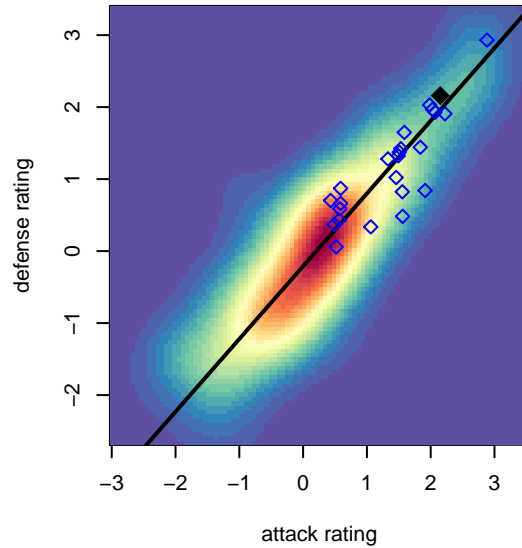
Capital FC Timbers Red G01
 Dots are actual minus expected GF (blue circles) and GA (red triangles).
 Blue line is smoothed change in attack strength. Red is smoothed change in defense strength.



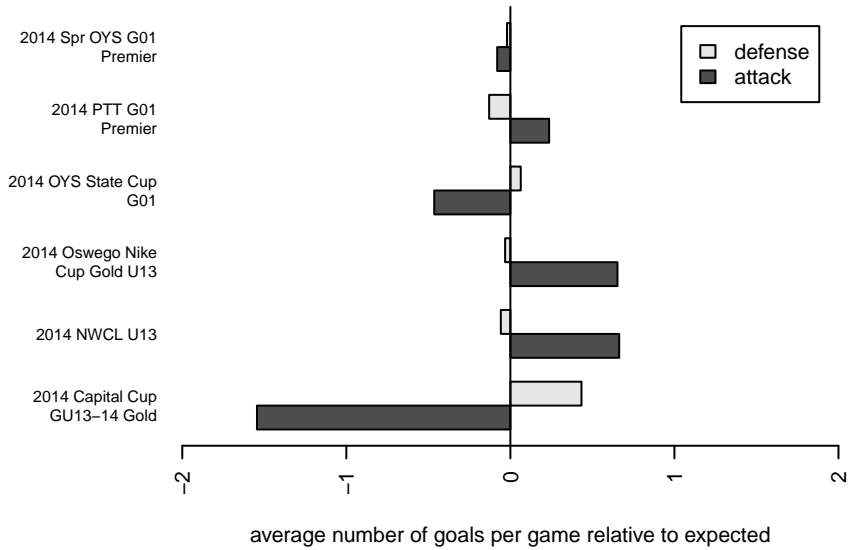
**attack and defense variance (black dot)
relative to other teams
and top 10 in region**



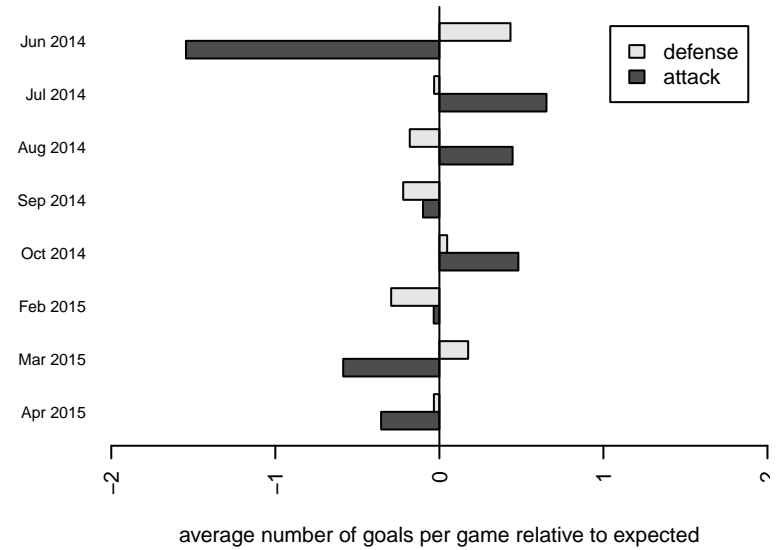
**attack and defense rating
relative to others at age
and all opponents in last 13 months**



Performance relative to 13 month average



Performance relative to 13 month average



date	home		away		venue	pred.home	pred.away
2015-05-03	FC Portland pre-ECNL G01	1	Capital FC Timbers Red G01	2	2014 OYS State Cup G01	1.08	1.35
2015-05-02	ETFC Cypress Black G01	0	Capital FC Timbers Red G01	1	2014 OYS State Cup G01	0.95	1.41
2015-04-26	Capital FC Timbers Red G01	2	Washington Timbers Red G01	1	2014 OYS State Cup G01	2.37	0.57
2015-04-25	FC Portland pre-ECNL G01	2	Capital FC Timbers Red G01	0	2014 OYS State Cup G01	1.08	1.35
2015-04-18	Capital FC Timbers Red G01	1	Bend FC Timbers Red G01	0	2014 OYS State Cup G01	2.64	0.47
2015-04-12	BSC Portland Black-Legends G01	0	Capital FC Timbers Red G01	5	2014 OYS State Cup G01	0.22	4.67
2015-04-04	Rogue Valley Timbers Red G01	0	Capital FC Timbers Red G01	4	2014 Spr OYS G01 Premier	0.49	2.75
2015-03-15	Capital FC Timbers Red G01	1	Bend FC Timbers Red G01	0	2014 Spr OYS G01 Premier	2.64	0.47
2015-03-14	Capital FC Timbers Red G01	3	Rogue Valley Timbers Red G01	1	2014 Spr OYS G01 Premier	2.75	0.49
2015-03-01	Capital FC Timbers Red G01	2	Washington Timbers Red G01	0	2014 Spr OYS G01 Premier	2.37	0.57
2015-02-22	Washington Timbers Green G01	0	Capital FC Timbers Red G01	3	2014 Spr OYS G01 Premier	0.20	4.55
2015-02-21	Eastside Timbers Red G01	2	Capital FC Timbers Red G01	2	2014 Spr OYS G01 Premier	0.59	1.84
2015-02-15	Capital FC Timbers Red G01	4	FC Portland pre-ECNL G01	1	2014 Spr OYS G01 Premier	1.35	1.08
2015-02-07	ETFC Cypress Black G01	1	Capital FC Timbers Red G01	0	2014 Spr OYS G01 Premier	0.95	1.41
2014-11-09	Grants Pass YSC Bulldogs G01	1	Capital FC Timbers Red G01	6	2014 PTT G01 Premier	0.20	6.35
2014-11-08	Capital FC Timbers Red G01	6	Bend FC Timbers Red G01	0	2014 PTT G01 Premier	2.64	0.47
2014-10-26	Capital FC Timbers Red G01	3	Bend FC Timbers Red G01	1	2014 PTT G01 Premier	2.64	0.47
2014-10-25	ETFC Cypress Black G01	0	Capital FC Timbers Red G01	3	2014 PTT G01 Premier	0.95	1.41
2014-10-19	Capital FC Timbers Red G01	2	Rogue Valley Timbers Red G01	1	2014 PTT G01 Premier	2.75	0.49
2014-10-18	Washington Timbers Red G01	0	Capital FC Timbers Red G01	3	2014 PTT G01 Premier	0.57	2.37
2014-10-11	Eastside Timbers Red G01	1	Capital FC Timbers Red G01	1	2014 PTT G01 Premier	0.59	1.84
2014-10-05	Eastside FC Red G01	1	Capital FC Timbers Red G01	2	2014 NWCL U13	0.83	1.29
2014-10-05	Capital FC Timbers Red G01	1	ETFC Cypress Black G01	0	2014 NWCL U13	1.41	0.95
2014-10-04	Capital FC Timbers Red G01	5	Snohomish United Black G01	1	2014 NWCL U13	2.44	0.53
2014-09-28	Capital FC Timbers Red G01	2	ETFC Cypress Black G01	2	2014 PTT G01 Premier	1.41	0.95
2014-09-27	Bend FC Timbers Red G01	0	Capital FC Timbers Red G01	3	2014 PTT G01 Premier	0.47	2.64
2014-09-20	Grants Pass YSC Bulldogs G01	0	Capital FC Timbers Red G01	5	2014 PTT G01 Premier	0.20	6.35
2014-09-14	Capital FC Timbers Red G01	4	Washington Timbers Red G01	0	2014 PTT G01 Premier	2.37	0.57

date	home		away		venue	pred.home	pred.away
2014-09-13	Capital FC Timbers Red G01	2	Eastside Timbers Red G01	2	2014 PTT G01 Premier	1.84	0.59
2014-09-07	Rogue Valley Timbers Red G01	0	Capital FC Timbers Red G01	1	2014 PTT G01 Premier	0.49	2.75
2014-09-06	Capital FC Timbers Red G01	6	Grants Pass YSC Bulldogs G01	1	2014 PTT G01 Premier	6.35	0.20
2014-08-24	WPFC A pre-ECNL G01	2	Capital FC Timbers Red G01	0	2014 NWCL U13	1.96	0.46
2014-08-23	ASE Emerald G01	0	Capital FC Timbers Red G01	4	2014 NWCL U13	0.46	4.15
2014-08-23	Capital FC Timbers Red G01	5	Spokane Foxes Premier G01	0	2014 NWCL U13	4.38	0.24
2014-08-22	Capital FC Timbers Red G01	4	FC Nova Pre-ECNL G01	2	2014 NWCL U13	2.23	0.61
2014-07-27	Arizona Thunder 02 Gold G01	1	Capital FC Timbers Red G01	3	2014 Oswego Nike Cup Gold U13	0.74	3.59
2014-07-27	WA Rush G01	0	Capital FC Timbers Red G01	4	2014 Oswego Nike Cup Gold U13	0.83	1.24
2014-07-26	Capital FC Timbers Red G01	4	Crossfire OR CUSC Power Rays G01	0	2014 Oswego Nike Cup Gold U13	2.90	0.20
2014-07-26	WA Rush G01	1	Capital FC Timbers Red G01	1	2014 Oswego Nike Cup Gold U13	0.83	1.24
2014-07-25	Capital FC Timbers Red G01	5	Pacific FC Blue G01	1	2014 Oswego Nike Cup Gold U13	4.77	0.23
2014-06-29	Capital FC Timbers Red G01	8	CSC Storm G00	0	2014 Capital Cup GU13-14 Gold	6.98	0.52
2014-06-29	Capital FC Timbers Red G01	2	Kidsport Rolling Thunder G01	0	2014 Capital Cup GU13-14 Gold	6.12	0.22
2014-06-28	Azul FC Chelsea G00	0	Capital FC Timbers Red G01	1	2014 Capital Cup GU13-14 Gold	0.59	1.73
2014-06-28	Kidsport Willamette Strikers G01	0	Capital FC Timbers Red G01	5	2014 Capital Cup GU13-14 Gold	0.30	5.92
2014-06-27	CSC Storm G00	0	Capital FC Timbers Red G01	4	2014 Capital Cup GU13-14 Gold	0.52	6.98